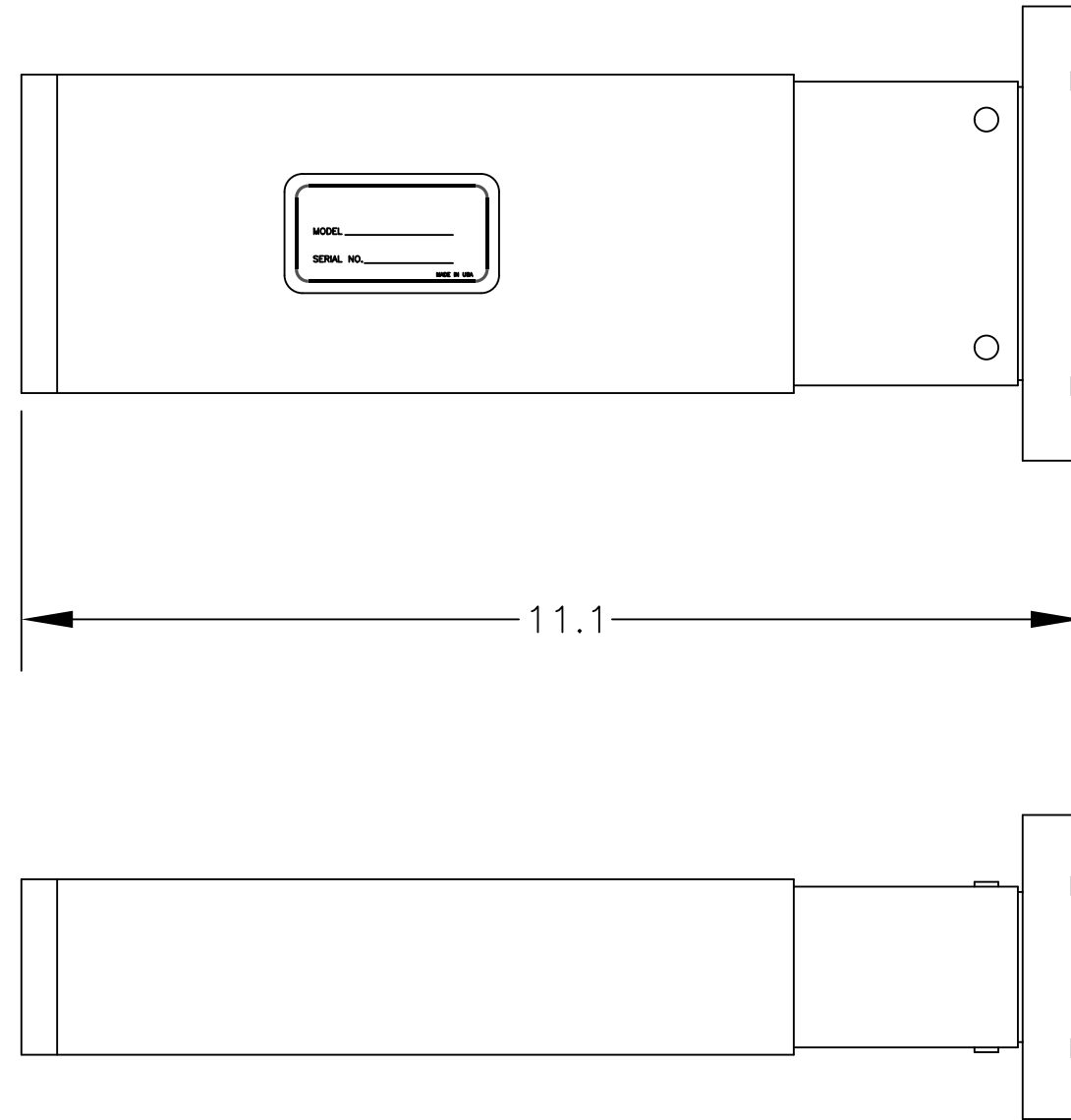
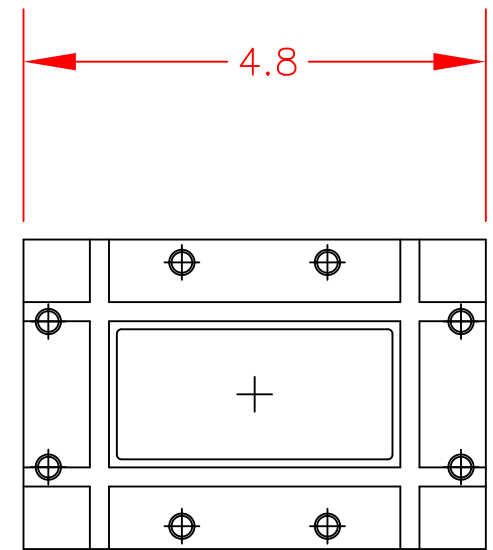
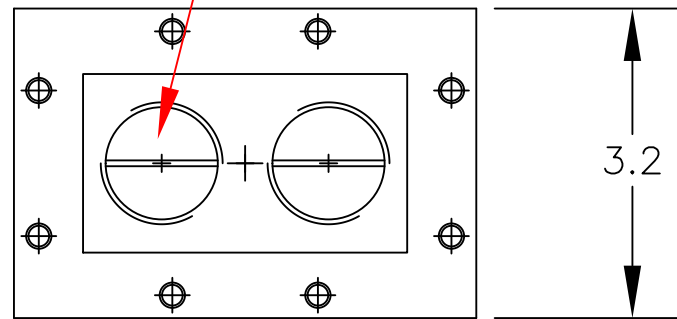


REVISIONS				
ZONE	REV	DESCRIPTION	DATE	APPROVED
	0	RELEASED FOR PRODUCTION	01/28/2000	Lou Nielsen



VARIAN STYLE
WR284 FLANGE

1" NPT FEMALE
TYP. 2 PL.



SPECIFICATIONS:

FREQUENCY RANGE: 2856±10 MHz
 POWER HANDLING: 9 kW AVERAGE, 25 MW PEAK
 VSWR: 1.15:1 MAXIMUM
 WAVEGUIDE ATMOSPHERE: 45 PSIG SF6
 COOLANT: WATER
 COOLANT FLOW RATE: 7 GALLONS PER MINUTE, ANY POSITION
 COOLANT PRESSURE: 125 PSIG MAXIMUM

TOLERANCES (UNLESS OTHERWISE SPECIFIED) DECIMALS: 1 PLACE +/- .050 2 PLACE +/- .020 3 PLACE +/- .005 FRACTIONS: +/- 1/16 ANGLES: +/- 1/2 DEGREE		CML Engineering, Inc. 2020 Ridgecrest Place, Escondido, CA 92029 TEL: 760-432-8490 FAX: 760-432-8350		
FINISH: 63 U INCH OR BETTER EDGES: BREAK EDGES 1/32 R MAX.		WATERLOAD, MODEL 4320-00		
MATERIAL: REFERENCE		SIZE B	CAGE CODE	DWG NO. 4320 - 0000
		SCALE NONE	Drawn By: L/JN Date: 01/28/2000	REV 0 SHEET 1 of 1