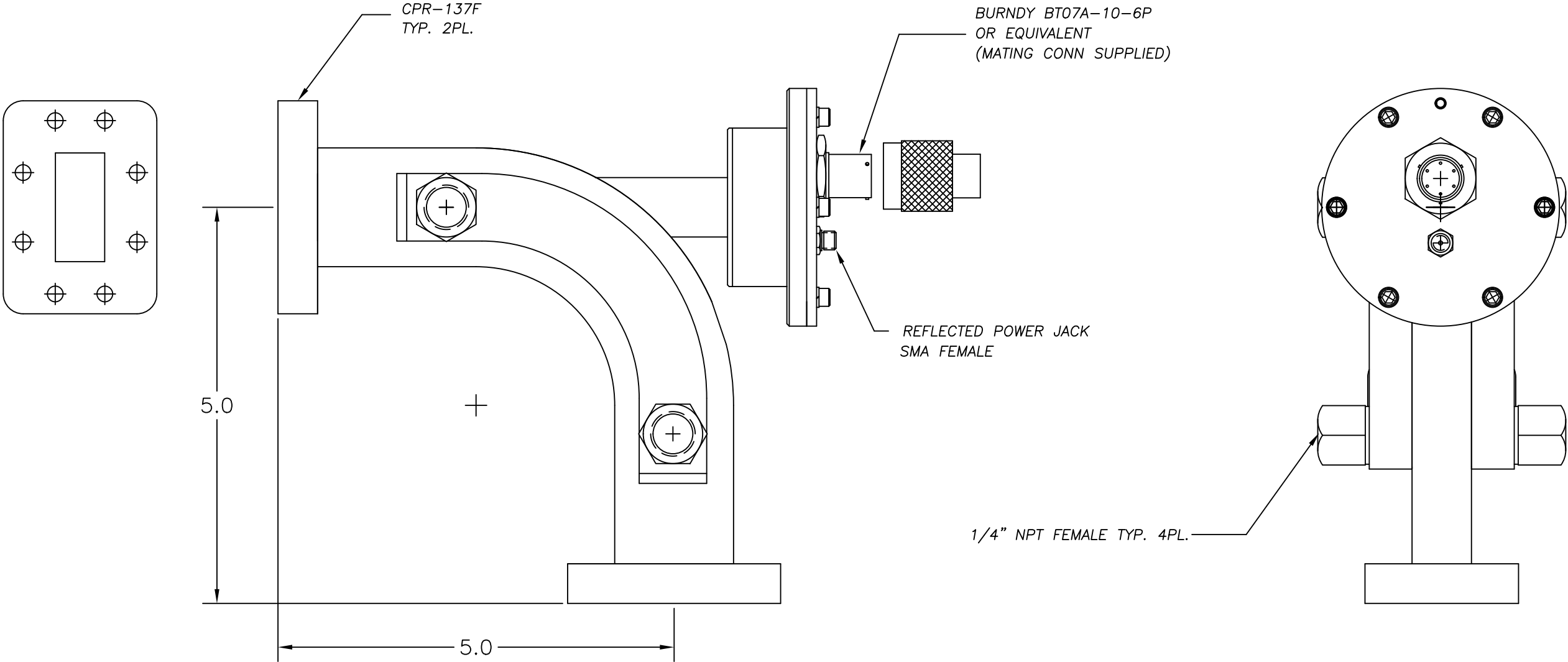


REVISIONS				
ZONE	REV	DESCRIPTION	DATE	APPROVED
	0	RELEASED FOR PRODUCTION	2/29/2012	Lou Nielsen



PIN	FUNCTION
A	SUPPLY VOLTAGE +28 VDC
B	COMMON (GROUND)
C	TEST LIGHT (MOMENTARY CONTACT TO GROUND)
D	OUTPUT +16 VDC, MINIMUM, ARMED +2 VDC, MAXIMUM, FIRED
E	REFLECTED POWER OUTPUT
F	OUTPUT (SAME AS PIN D)

<p align="center"><b>TOLERANCES</b> (UNLESS OTHERWISE SPECIFIED)</p> <p>DECIMALS:</p> <p>1 PLACE ± .050</p> <p>2 PLACE ± .020</p> <p>3 PLACE ± .005</p> <p>FRACTIONS: ± 1/16</p> <p>ANGLES: ± 1/2 DEGREE</p>				<p align="center"><b>CML Engineering, Inc.</b></p> <p align="center">684 Rancheros Drive, Escondido, CA 92069 TEL: 760-591-0980 FAX: 760-591-0979</p>			
<p align="center"><b>ARC SENSOR, MODEL6240-03</b></p>							
SIZE	CAGE CODE	DWG NO.				REV	
B	1ZLK8	6240-03-0000				0	
SCALE	NONE	Drawn By: L/JN	Date: 2/29/2012	SHEET	1 of 1		